

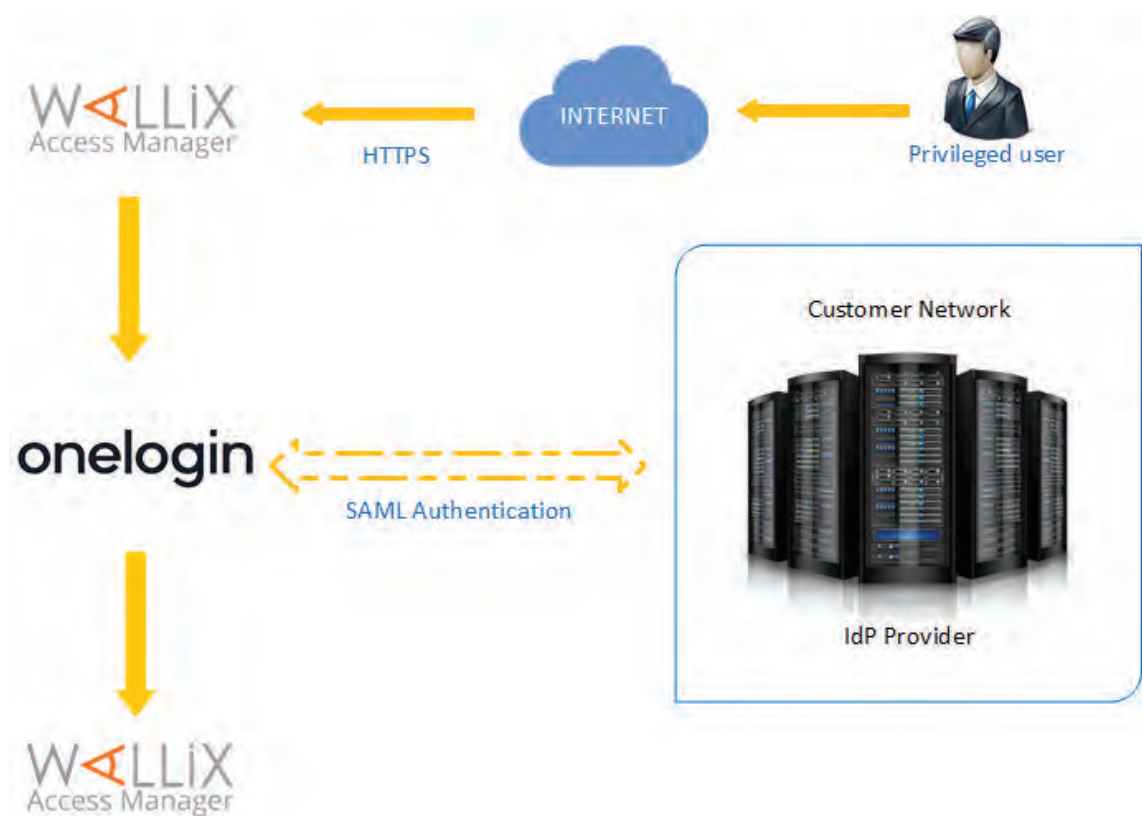
WALLIX and OneLogin have joined forces to increase companies' level of security and compliance.

To lock down systems against unauthorized access and data breaches, security teams and administrators today need to establish a "defense in depth" strategy whereby the system as a whole is protected by using multiple layers of defense to protect access to sensitive data and privileged accounts.

OneLogin and WALLIX solutions work together to truly provide a layered defense in depth. Where the WALLIX Bastion excels at providing only the appropriate access to privileged users, OneLogin's solution helps to ensure that users are who they say they are before they ever reach the point at which privileges must be determined and granted.

Organizations can now connect their WALLIX Bastion Access Manager solution to their OneLogin Identity Access Management Platform by using SAML protocol for Single Sign-On (SSO) and Multi-Factor Authentication (MFA) solutions to secure and centralize authentication of access to privileged accounts.

Figure #1: infrastructure model



WALLIX Bastion

Privileged Access Management

- **Access Manager:** Give access permissions based on the user profile and group.
- **Session Manager:** Trace RDP and SSH connections, Applications with audit logs and session records.
- **Password Manager:** Store passwords of target servers in the vault with the possibility to change these passwords or SSH keys.

OneLogin Identity and Access Management

- **Secure Authentication and Identity Management:** Cloud-delivered Single Sign-On (SSO) and centralized directory to enable organizations to manage user access to corporate applications. The platform also includes user provisioning, lifecycle management and MFA for cloud and on-premises apps.
- **SmartFactor Authentication:** a context-aware authentication methodology based on AI/ML insights into user behavior to ensure privileged credentials are not abused.
- **Adaptive Login Flows:** Automatically restructure authentication flow based on risk. When anomalous or risky activity is detected, a user may be required to authenticate using factors other than text-based passwords, including MFA, certificates, and biometric data.

JOINT SOLUTIONS BENEFITS

SECURITY

- Add a layer of security to sensitive resource access
- Protect privileged account credentials

VISIBILITY

- Control & alert on suspicious activities
- Gain analytics and reporting on user management and login activity

SIMPLICITY

- Simplify employee access to cloud and on-premise applications
- Integrate the WALLIX Bastion with OneLogin easily and quickly (within just a few hours)

USER EXPERIENCE

- Deliver a consistent login experience across all devices and applications
- Improve security without cutting corners on productivity

About WALLIX

WALLIX Group is cybersecurity software vendor dedicated to defending and fostering organizations' success and renown against cyberthreats. For over a decade, WALLIX has striven to protect companies, public organizations, and service providers' most critical and strategic IT assets against data breaches, making it the European expert in Privileged Access Management.

<https://www.wallix.com>

About OneLogin

OneLogin, the leader in Unified Access Management, connects people with technology through a simple and secure login, empowering organizations to access the world™. The OneLogin Unified Access Management (UAM) platform is the key to unlocking the apps, devices, and data that drive productivity and facilitate collaboration. OneLogin serves businesses and partners across a multitude of industries, with over 2,500 customers worldwide.

<https://www.onelogin.com>

WALLIX Product:

WALLIX Bastion

OneLogin Product:

OneLogin Identity Management